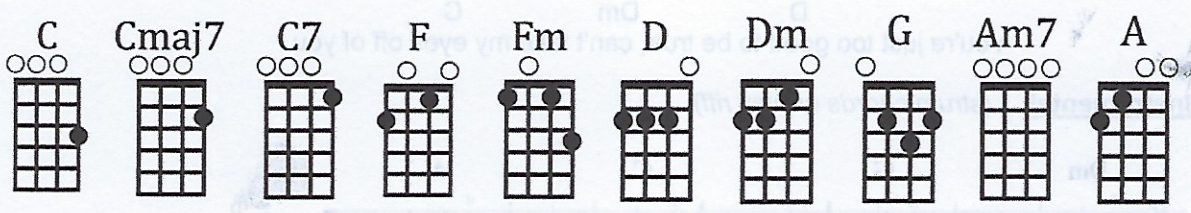


# Can't Take My Eyes Off You

Written by Bob Crewe and Bob Gaudio

Link to the video tutorial for this song: <https://youtu.be/GhWM8eGHwd4>



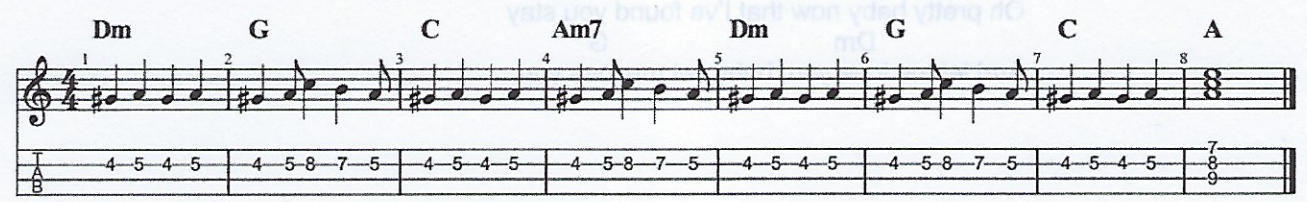
**Verse 1**

C Cmaj7  
You're just too good to be true, can't take my eyes off you  
C7 F  
You'd be like heaven to touch, I wanna hold you so much  
Fm C  
At long last love has arrived, and I thank God I'm alive  
D Dm C  
You're just too good to be true, can't take my eyes off of you

**Verse 2**

C Cmaj7  
Pardon the way that I stare, there's nothing else to compare  
C7 F  
The sight of you makes me weak, there are no words left to speak  
Fm C  
But if you feel like I feel, please let me know that it's real  
D Dm C  
You're just too good to be true, can't take my eyes off of you

**Instrumental** (strum chords or play riff)



**Chorus**

Dm G  
I love you baby and if it's quite alright  
C Am7  
I need you baby to warm the lonely night  
Dm G C  
I love you baby trust in me when I say  
A Dm G  
Oh pretty baby don't bring me down, I pray  
C Am7  
Oh pretty baby now that I've found you, stay  
Dm G  
And let me love you, baby, let me love you